

TECHNICAL DATASHEET

GELSPORT FIT

Author:	Pavla Toboláková
Verified by:	Jaroslav Gajdůšek
Published by:	GELPO s.r.o., Vazová 2143, 688 01 Uherský Brod
Issue date:	8/11/2024
Approved by:	Pavel Hartman

Basic information

GELSPORT FIT is an elastomer board made of a mixture of recycled rubber granulates SBR¹, EPDM and polyurethane binder.

Specified applications

GELSPORT flooring materials are designed as multi-function indoor surfaces subject to EN 14904:2006. They can be used in fitness centres, sports and exhibition halls. There are many various applications thanks to their high resistance to mechanical damage. Most often, the GELSPORT flooring materials are used for the following applications:

- Universal floor damping boards
- Boards placed under workout machines and other equipment
- Damping mats for sport systems in halls and gyms

Product description

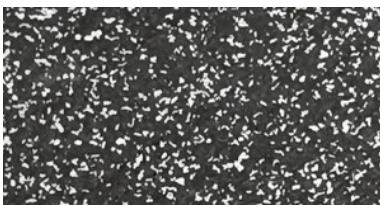
Basic material: recycled rubber

EPDM content

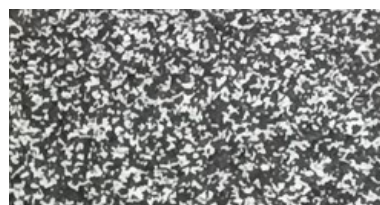
10 %



20 %



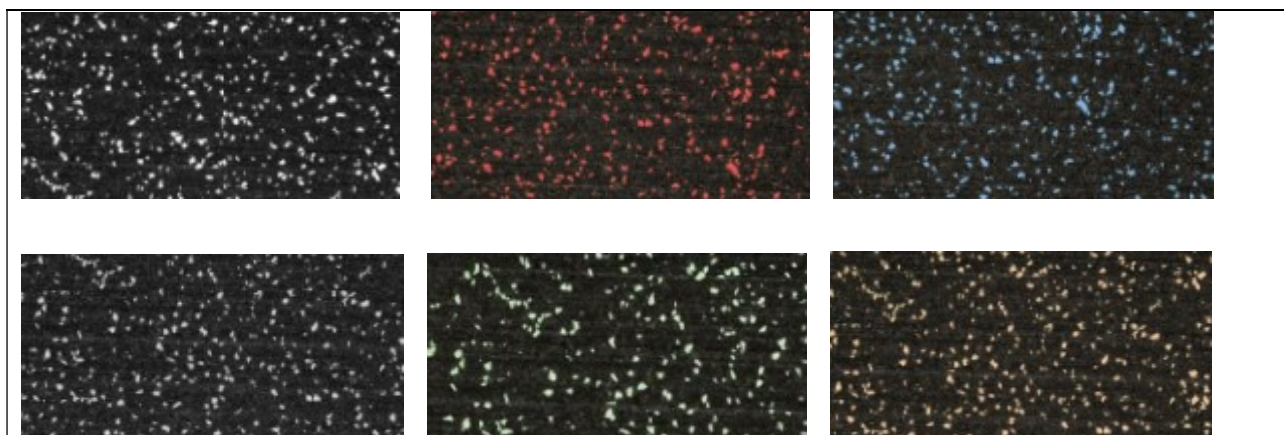
40 %



Basic colour fillers:

White, red, blue, grey, green, yellow

¹ The rubber granulate is a recycled tyre rubber product. The purity of the input material is 99.9% (minor impurities may occur).



Other colours available on customer's request including different colour combinations.

Surface

We manufacture the product from recycled materials the colour shade of which may slightly vary. A characteristic feature of a rubber granulate board is a visible fine porosity that may be uneven on the board surface.

To achieve the desired thickness, we use a chipping/cutting technology. This is a high precision technology. Chip marks may be left on the board surface. They may be visible or there may be fine grooves that have no effect on the function of the product and will disappear with normal wear. We recommend that the puzzle and the boards are laid in the same cutting direction in order to hide the marks easily.

Dimensions:

The basic unformatted size is 2060 x 1050.

The products can be formatted to any size.

The standard formatted sizes are 2000 x 1000 mm, Puzzle 500 x 500 mm, Puzzle 1000 x 1000 mm, Puzzle 2000 x 1000 mm.

Thickness:	Weight ² approx. kg/1m ²			
	0 % filler	10 % filler	20 % filler	40 % filler
5 mm	5.3	5.4	5.6	5.9
6 mm	6.3	6.5	6.7	7.1
8 mm	8.4	8.6	9	9.5
10 mm	10.5	10.8	11.2	11.9
16 mm	16.8	17.3	17.9	19
20 mm	21	21.6	22.4	23.8

² The weight of various colour rubber granulates may vary. Having chosen the desired colour combination, the weight will be specified by the sales manager on request.

Product features ³				
Parameter	Value	Unit	Tolerance:	Testing method
Length tolerance ⁴ (0-2000 mm)		mm	± 1	
Length tolerance ⁴ (1001-2000 mm)		mm	± 2	
Thickness tolerance (5-6 mm)		mm	± 0,5	
Thickness tolerance (6,1-10 mm)		mm	± 0,6	
Thickness tolerance (10,1-20 mm)		mm	± 0,8	
Weight tolerance		%	± 5	
Response to fire	E _{fl}			EN 13501-1:2019
Dry shear friction coefficient - static μ_s	1.01	μ_s		ČSN 74 4507
Dry shear friction coefficient - dynamic μ_d	1.34	μ_d		ČSN 74 4507
Wet shear friction coefficient - static μ_s	1.15	μ_s		ČSN 74 4507
Wet shear friction coefficient - dynamic μ_d	1.36	μ_d		ČSN 74 4507
Tensile strength at break	4.14	MPa		ČSN ISO 37
Proportional elongation at maximum load	168	%		ČSN ISO 37
Compressive stress at 10% deformation	0.46	MPa		ČSN EN 826
Compressive stress at 20% deformation	1.71	MPa		ČSN EN 826
Shore A hardness	64	°Sh		ČSN ISO 48-4

Certification
Quality management system to ISO 9001. Properties assessment subject to EN 14904:2006 Indoors surface for multi-sport use – Hall surfaces for multi-purpose use. ⁵

Additional information	
Handling and storage	<p>The boards are delivered on wooden pallets and wrapped with non-transparent stretch film. The number of pieces on a pallet is determined by the thickness of the individual boards, the maximum weight per pallet is 1 500 kg.</p> <p>The boards should be stored at temperatures from -20 to +40 °C, during storage, they should be protected from rain and snow</p>
Health and safety	<p>The boards comply with the health and safety criteria for the intended applications as specified in this technical data sheet.</p>

³ Tested on a black board, thickness 10 mm.

⁴ Length tolerance of an unformatted size is ± 1.5 %. Unformatted site may have machine outlet edges up to 4 mm.

⁵ The Declaration of Performance 1/2023 will be provided upon request.

Installation	The boards are laid on the floor either loose with butt fixing (in joints) or with glue applied on their entire surface. Where the glue is not applied on the entire board surface, it is necessary to take into account the boards thermal expansion up to 2 % and in the case of a large temperature fluctuation, permanent plastic deformation of the plate may occur. Care should be taken when moving heavy objects.
Maintenance	The standard maintenance consists of cleaning the surface with water and detergent products, either by wiping or with a rotary floor cleaning machine. Routine cleaning sing broom and vacuum cleaner. Do not use organic solvents. The SAVO detergent may left colour stains (film) on the surface
Warranty	The warranty covering GELSPORT products is 24 months.

The above information is valid at the time of the issue of the technical data sheet and is based on objective testing and the manufacturer's own experience.

The manufacturer reserves the right to amend this information.

Any changes/amendments may be agreed with the customer in the form of a supplementary contract or other agreed document.